

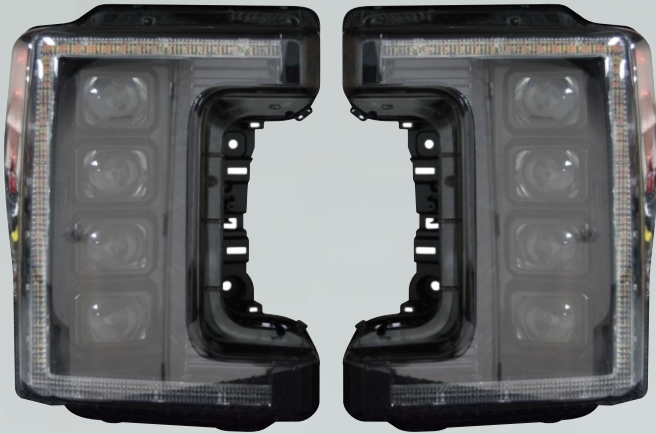


THE AUTOMOTIVE LIGHTING BENCHMARK

17+ SUPER DUTY XB LED HEADLIGHTS INSTALL GUIDE

WARNING: By reading this document, you agree it is only to be used as an educational guide. Morimoto Lighting nor its dealers make guarantees on any finished results, nor are they to be held responsible for any damage, misuse, or personal injuries. If you are unable to clearly understand and adapt the information below, professional installation is recommended.

PACKAGE CONTENTS



2X HEADLIGHT ASSEMBLIES



1X FUSE TAP / DRL HARNESS
(FOR OEM HALOGEN TRUCKS ONLY)

IMPORTANT: If your vehicle is equipped with anything but OEM turn signals (full assemblies, LED bulbs, or otherwise) in the tail lights or elsewhere: You may experience a hyper flash and/or problem with the sequential signal setting on these headlights. This is not a defect in the headlight, and caused by un-matched impedance with your original vehicle settings.

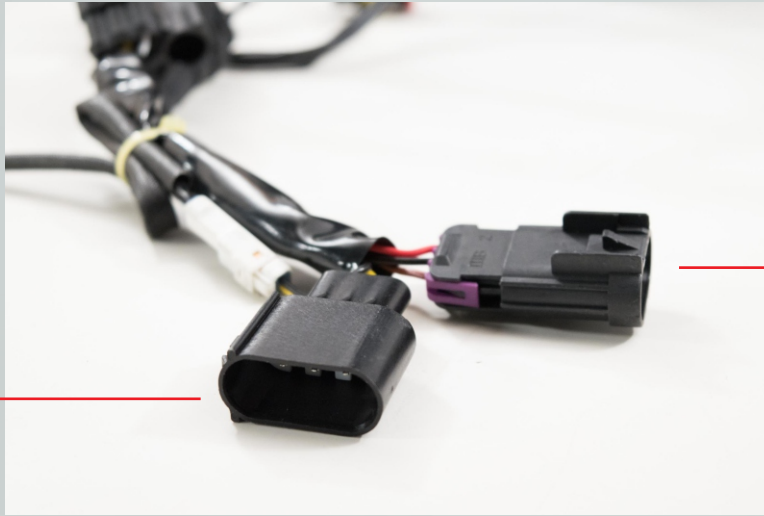
OEM HALOGEN TRUCKS

PROCEED TO PAGE 2

OEM LED TRUCKS

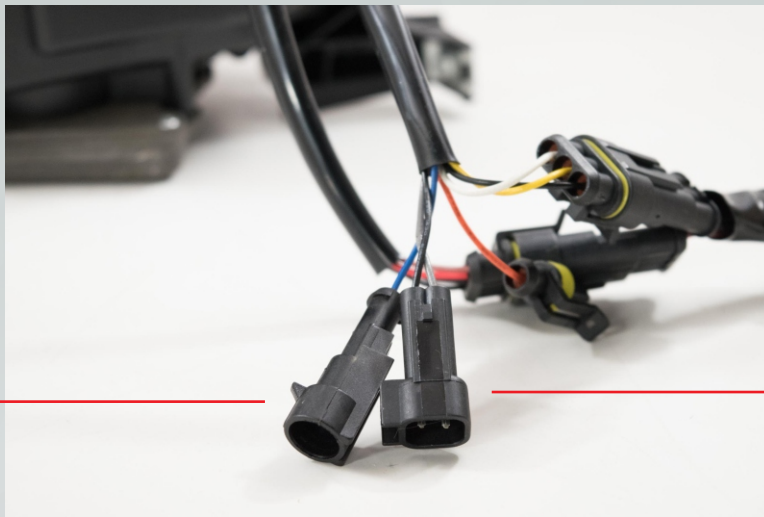
SKIP TO PAGE 3

CONNECTOR IDENTIFICATION FOR OEM HALOGEN TRUCKS ONLY



**PARKING LIGHT
& TURN SIGNAL**

**HIGH BEAM &
LOW BEAM**



**DRL HARNESS
INPUT**

**SIDEMARKER
LIGHT**



**SEQUENTIAL
TURN SIGNAL
TOGGLE**

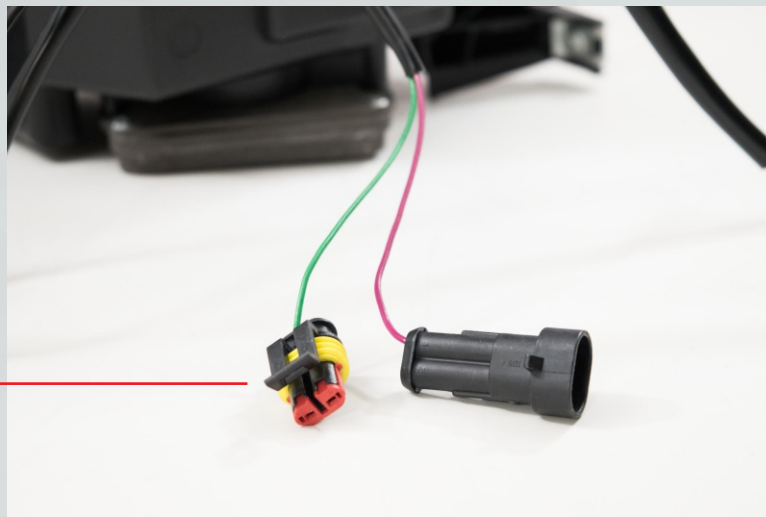
CONNECTOR IDENTIFICATION FOR OEM LED TRUCKS ONLY

NOT USED



INPUT

SEQUENTIAL
TURN SIGNAL
TOGGLE



*TIP FOR EASIER AIMING

Before removing stock headlight, park your truck somewhere where you can shine the stock headlight on a wall and mark the top edge of the original beam with a small piece of masking tape. Do not move truck until new lights are aimed and installed.

INSTALLATION PROCESS

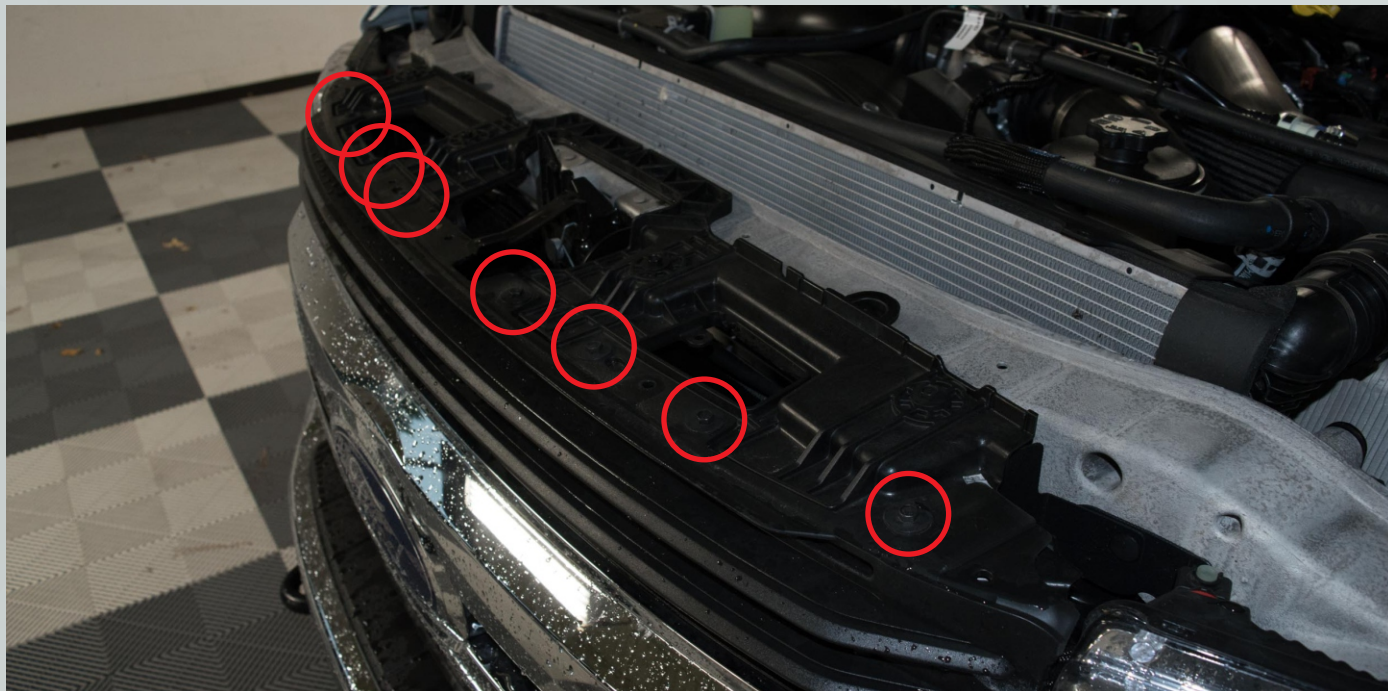
1. Remove all plastic push clips from radiator cover, indicated in red below.



2. Remove the plastic radiator cover and set aside.



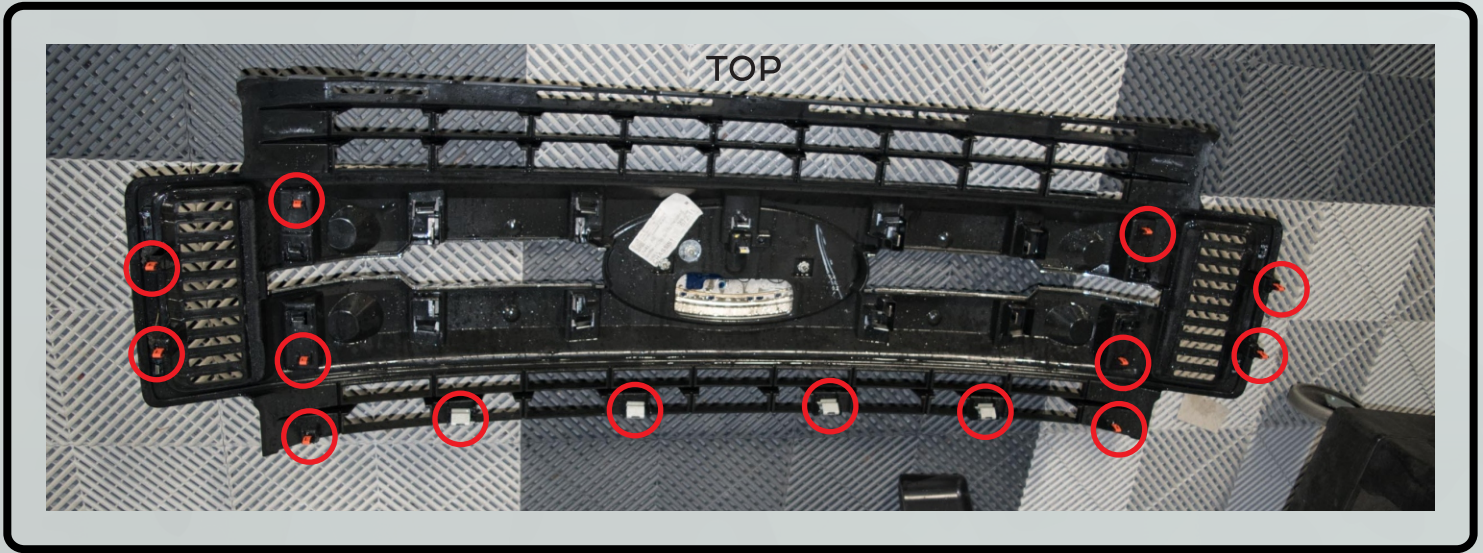
3. At the leading edge of the grille, remove all of the 10mm bolts.



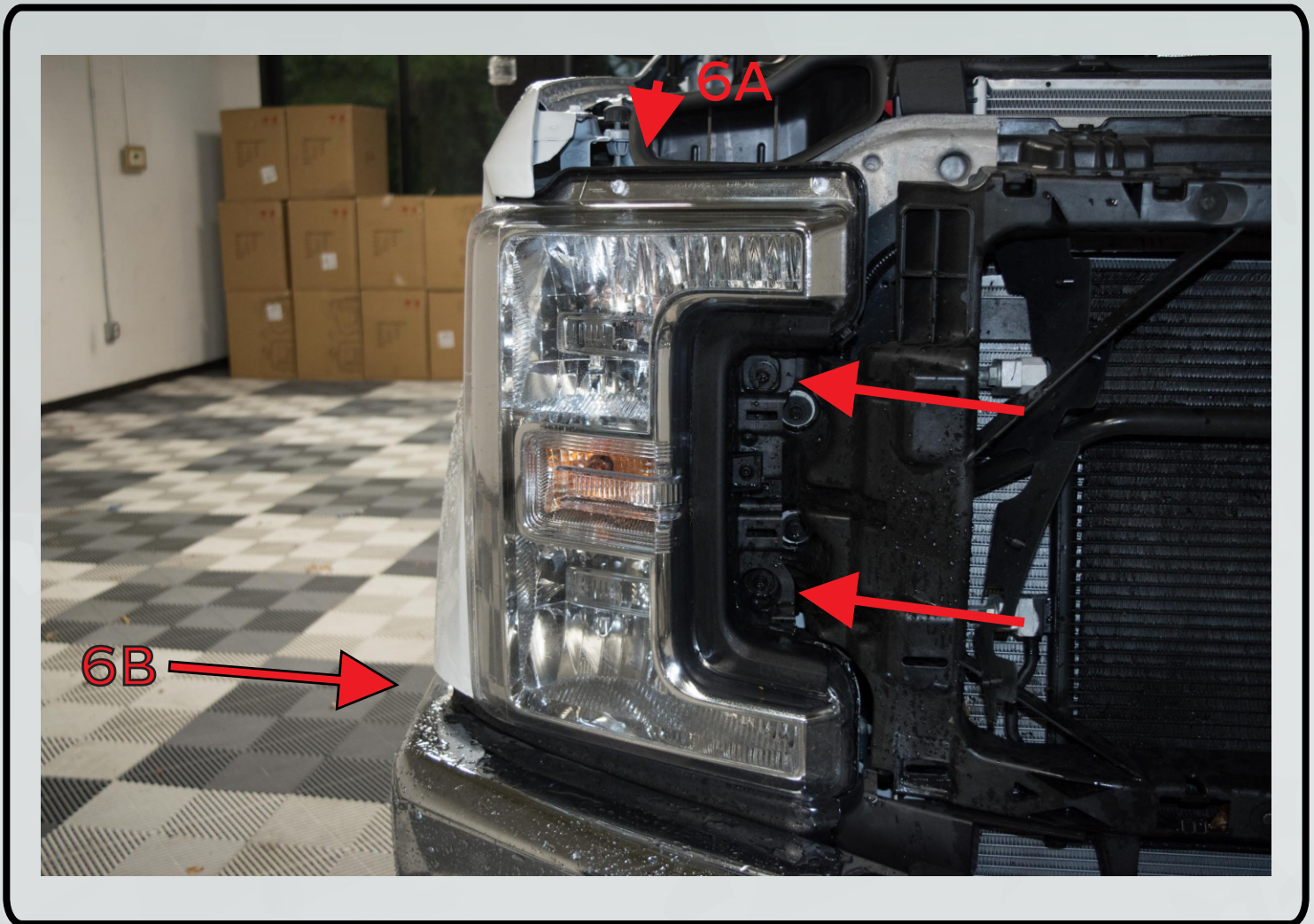
4. Gently but deliberately, pull the top of the grille forward to begin to release the clips that retain it.



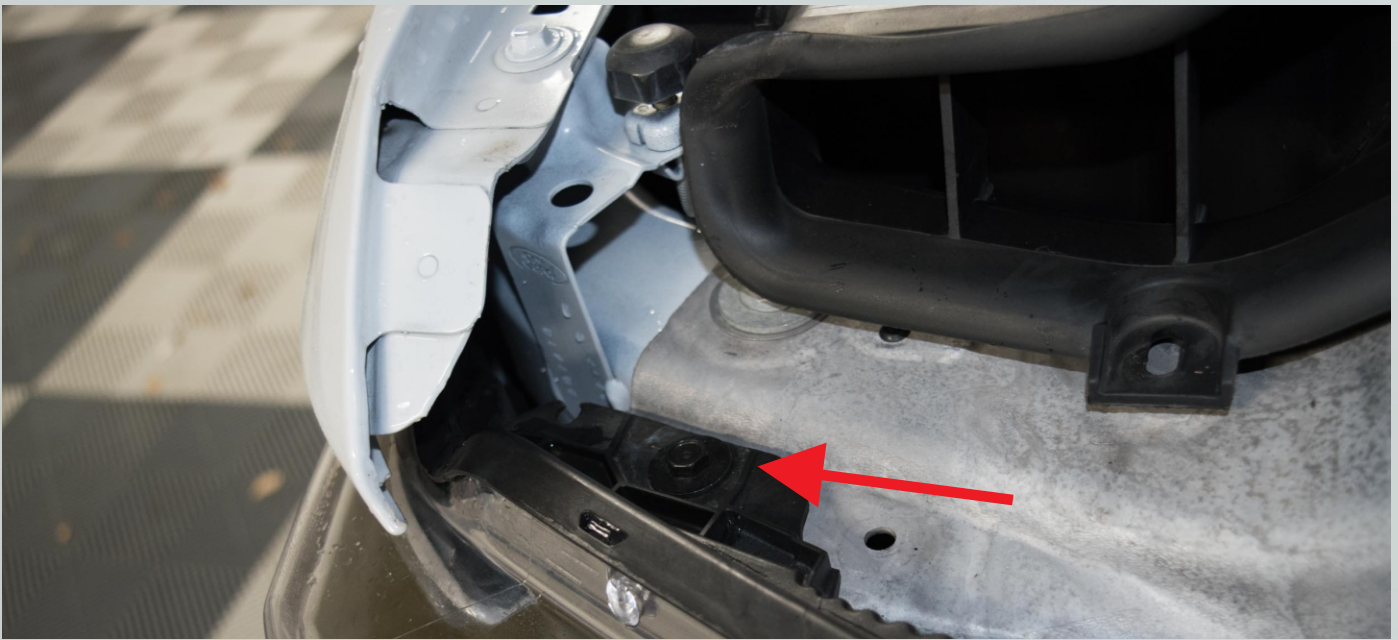
5. Continue to tug on the grille shell by pulling forward to release all of the clips that retain it.



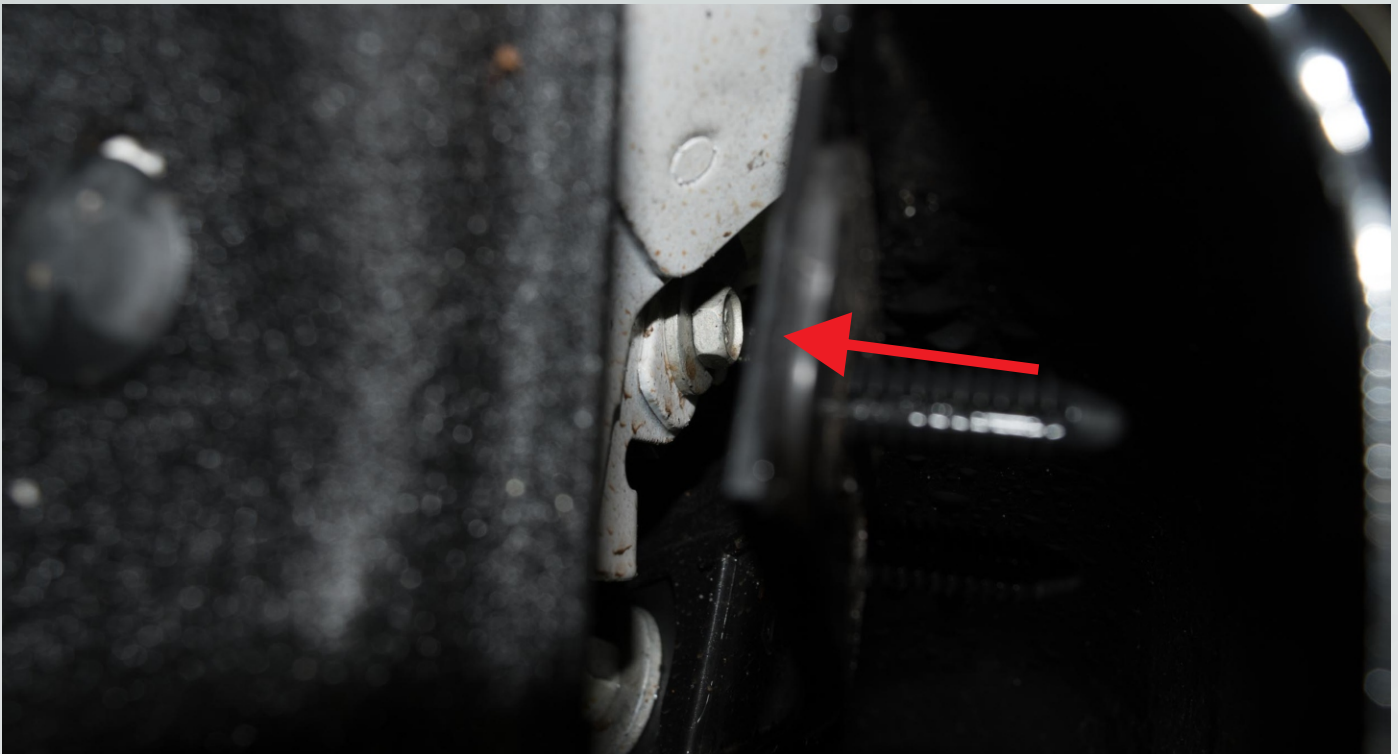
6. Before removing any of the four bolts that retain each headlight, familiarize yourself with their locations. There are two at the front, one on top, and one in a very small cavity accessible from the wheel well.



6A. The top bolt on each headlight is indicated--use a 10mm socket to remove it.



6B. The most difficult bolt to access is indicated. It is best removed with patience and a ratcheting 10mm closed-end wrench and is accessed via a very slim opening between the fender liner and bumper. There is one of these bolts per headlight (two total).



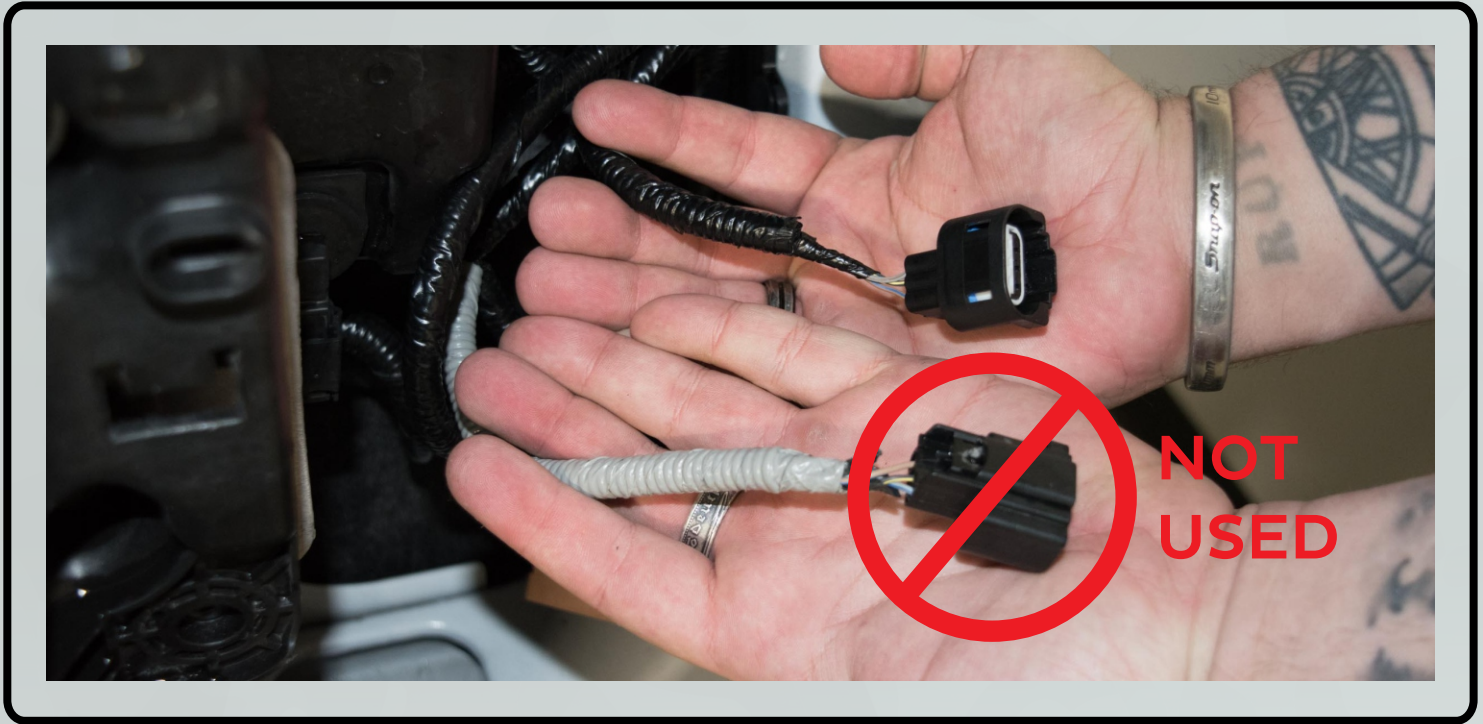
7. Remove the headlight assemblies. Bear in mind they are quite cumbersome to remove as they need to be twisted / rotated to remove from the truck.



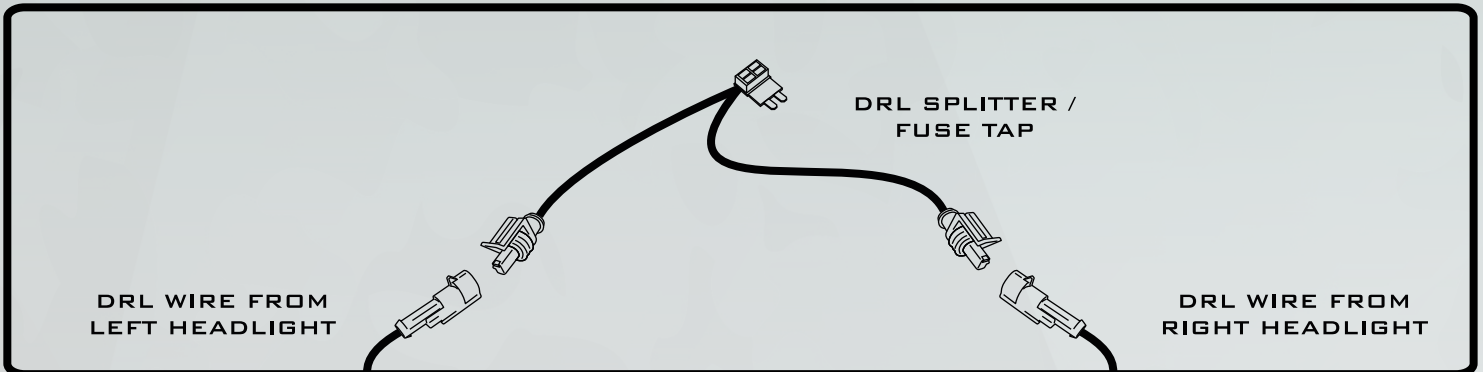
8. Unplug and remove each electrical connection from the back of the housings. For the halogen trucks, there are four electrical plugs to remove from the back of each housing.



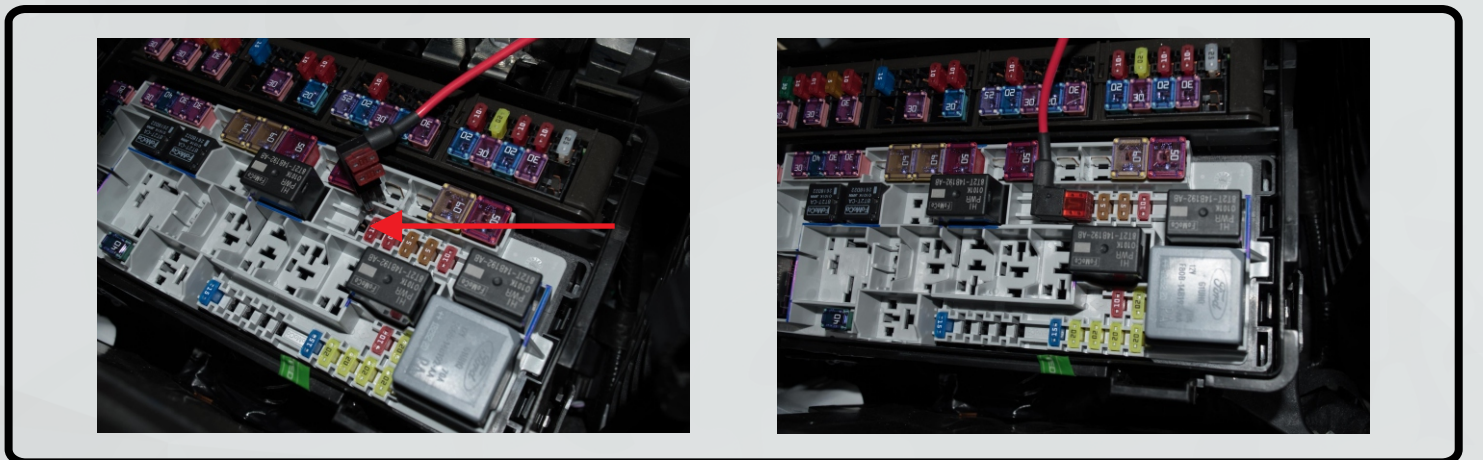
9. Connect stock headlight connectors to the Morimoto headlights. Refer to page 2 or 3 for identification. There are two H13 connectors per headlight. Use the H13 connector with the black wiring loom and not the grey loom as indicated.



10. (OEM HALOGEN TRUCKS ONLY): Plug in DRL leads to each headlight's DRL plug



11. (OEM HALOGEN TRUCKS ONLY): Route the DRL "Y-Harness" across the top of the radiator support and the fuse tap to the fusebox. Insert the fuse tap into position #35 as indicated.



NOTE: (OEM HALOGEN TRUCKS ONLY): In the infotainment display, turn the daytime running lights OFF.



12. Fit the new headlight assemblies. Bear in mind they are quite cumbersome to install as they need to be twisted / rotated to be fitted to the truck.



12A. Note that there is a rubber seal at the bottom of the headlights, which should sit in front of the headlight when installed.



13. Configure the turn signal wiring to your preference:



18. Test all functions of lights before bolting them on to the truck. We recommend leaving the lights on for five minutes with the truck's engine running. Certain functions require the capacitors to have a charge which naturally takes a short amount of time.

Normal operation is as follows:

- Parking lights: dim DRL outline and amber sidemarker turned on
- Daytime Running Light: full intensity on white outline
- Low Beam: dim DRL outline, amber sidemarker, and all four projectors turned on
- High Beam: dim DRL outline, amber sidemarker, and all four projectors turned on, two in high beam mode
- Auto Function: functions as normal

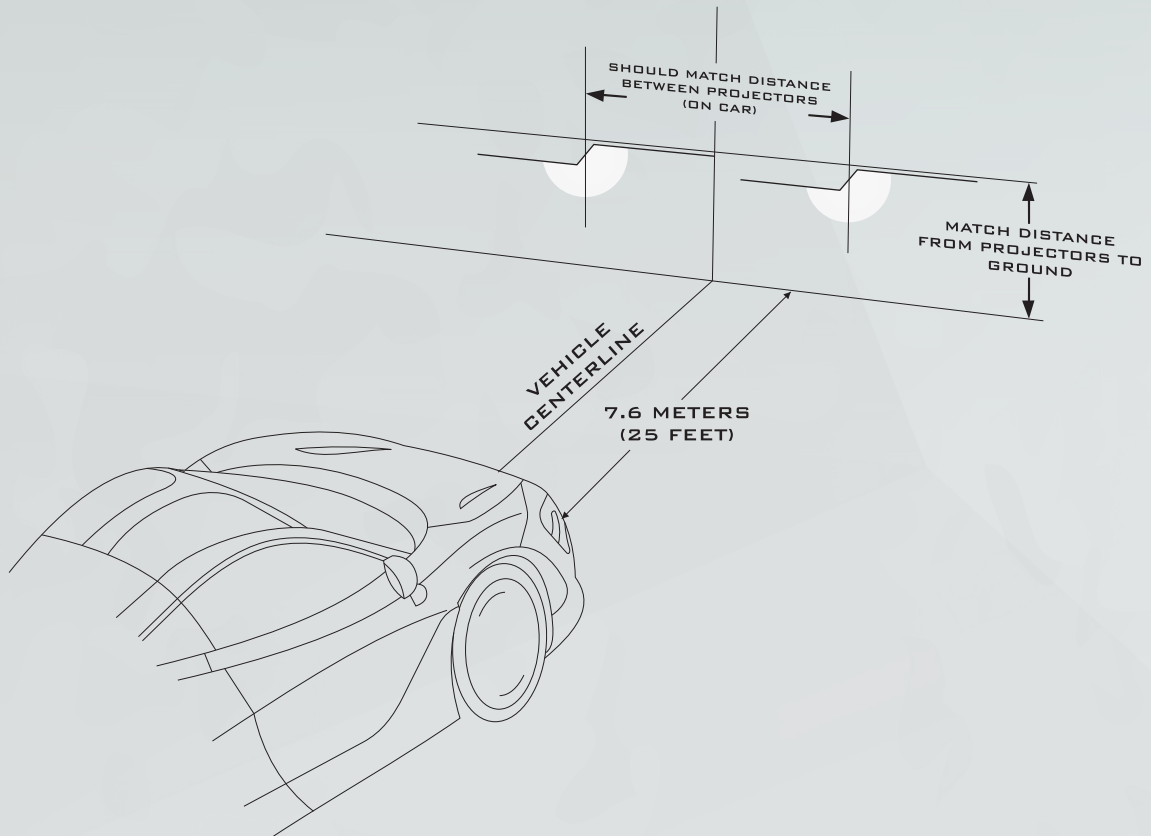
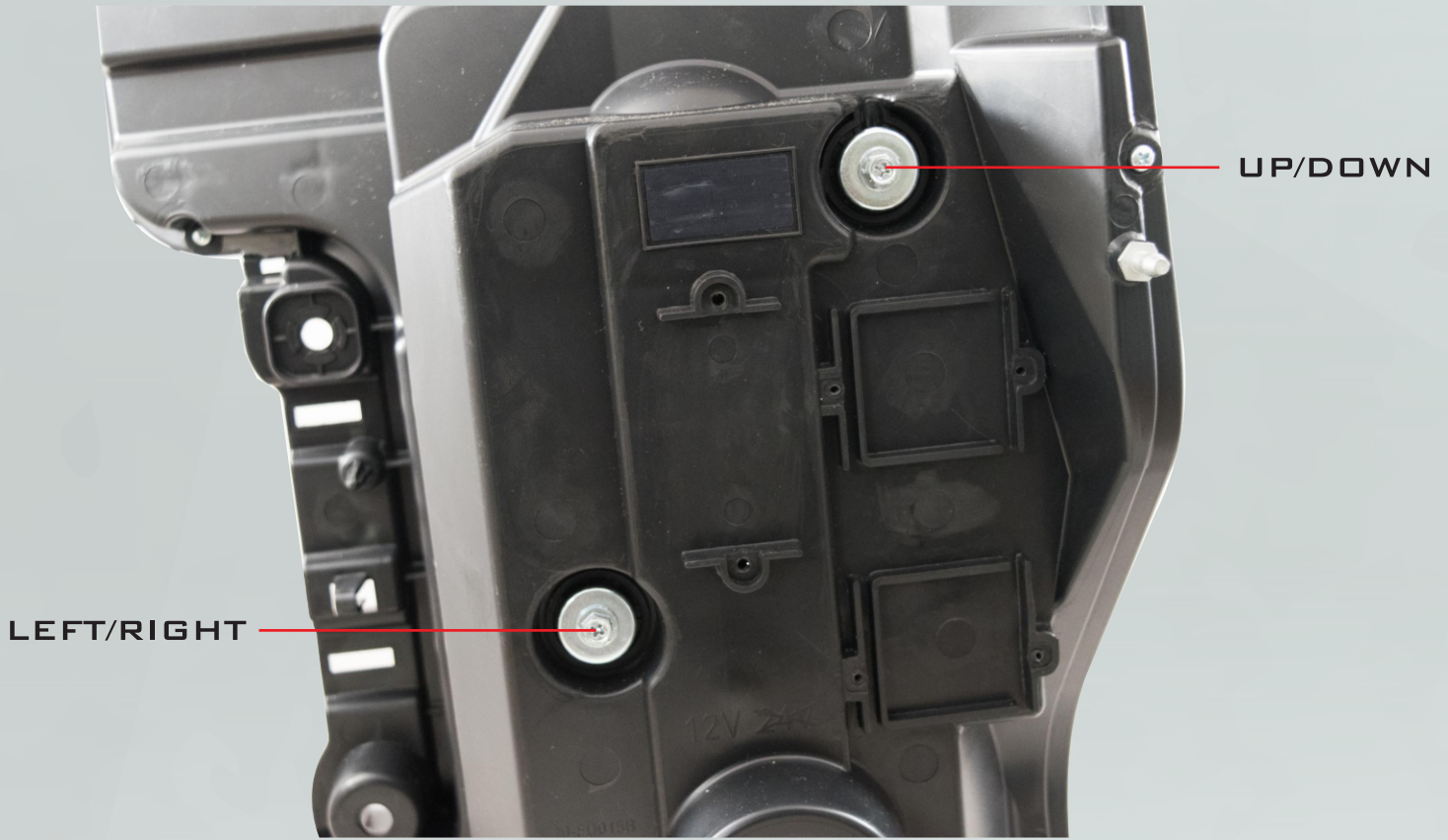
NOTE: If the DRL is flashing / pulsing, connect the capacitor shown below that is mounted on the back of the headlight in-between the Parking Light / Turn Signal connection.



Capacitor for DRL / Turn Signal
(Mounted to back of housing)

If any functions do not work, we recommend contacting your Morimoto dealer for troubleshooting.

14. Aiming: Please refer to the aiming standards below using the indicated adjusters.



Adjusters can also be accessed from the top with the headlights installed for fine-tuning using a long Philips screwdriver.



15. If everything works as expected, proceed to re-install lights and cover pieces.

Re-assembly / Installation is reverse of removal.

-END-